

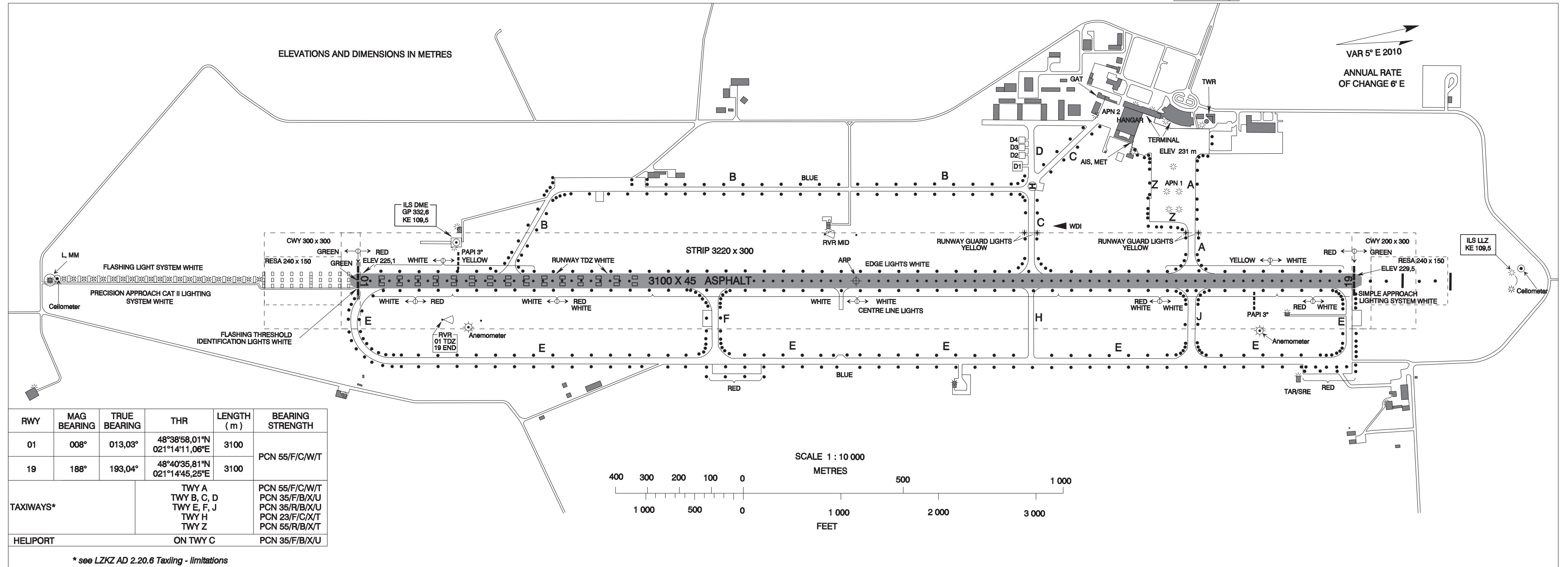
AERODROME CHART - ICAO

48°39'47"N
021°14'28"E

ELEV 230 m

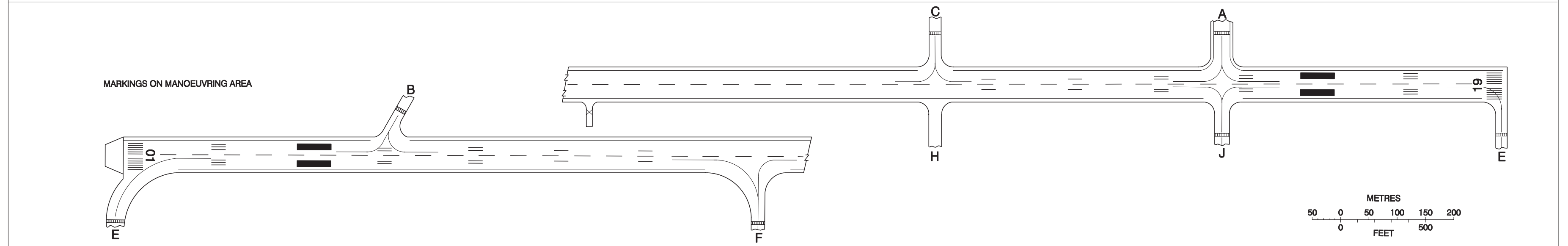
TWR 120,4
121,5

KOŠICE



RWY	MAG BEARING	TRUE BEARING	THR	LENGTH (m)	BEARING STRENGTH
01	008°	013,03°	48°38'58,01"N 021°14'11,06"E	3100	PCN 55/F/C/W/T
19	188°	193,04°	48°40'35,81"N 021°14'45,25"E	3100	
TAXIWAYS*			TWY A TWY B, C, D TWY E, F, J TWY H TWY Z	PCN 55/F/C/W/T PCN 35/F/B/X/U PCN 35/R/B/X/U PCN 23/F/C/X/T PCN 55/R/B/X/T	
HELIPORT			ON TWY C	PCN 35/F/B/X/U	

* see LZKZ AD 2.20.6 Taxiing - limitations

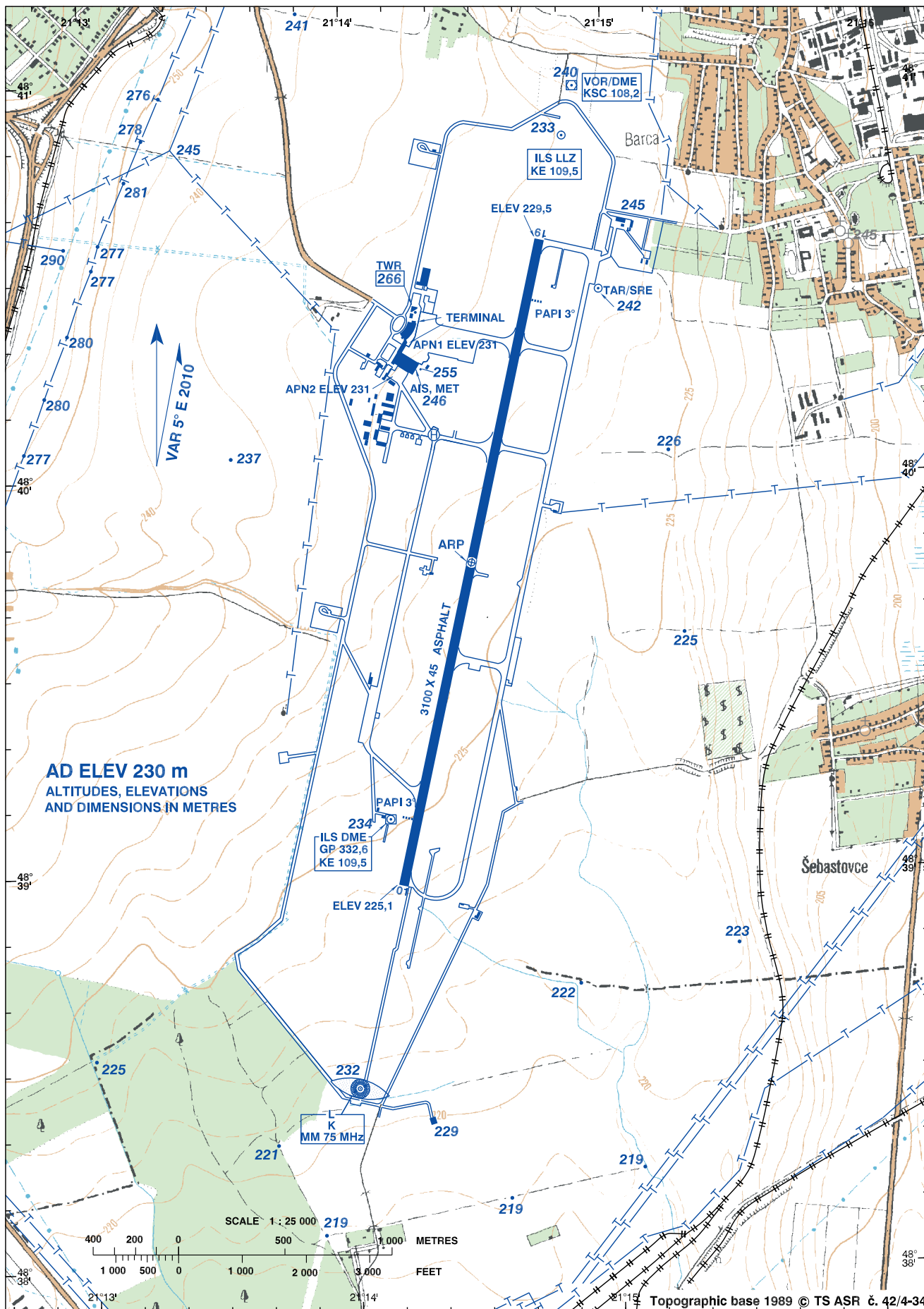


LANDING CHART

48°39'47"N
021°14'28"E

KOŠICE APPROACH / RADAR 119,85
KOŠICE TOWER 120,4

KOŠICE

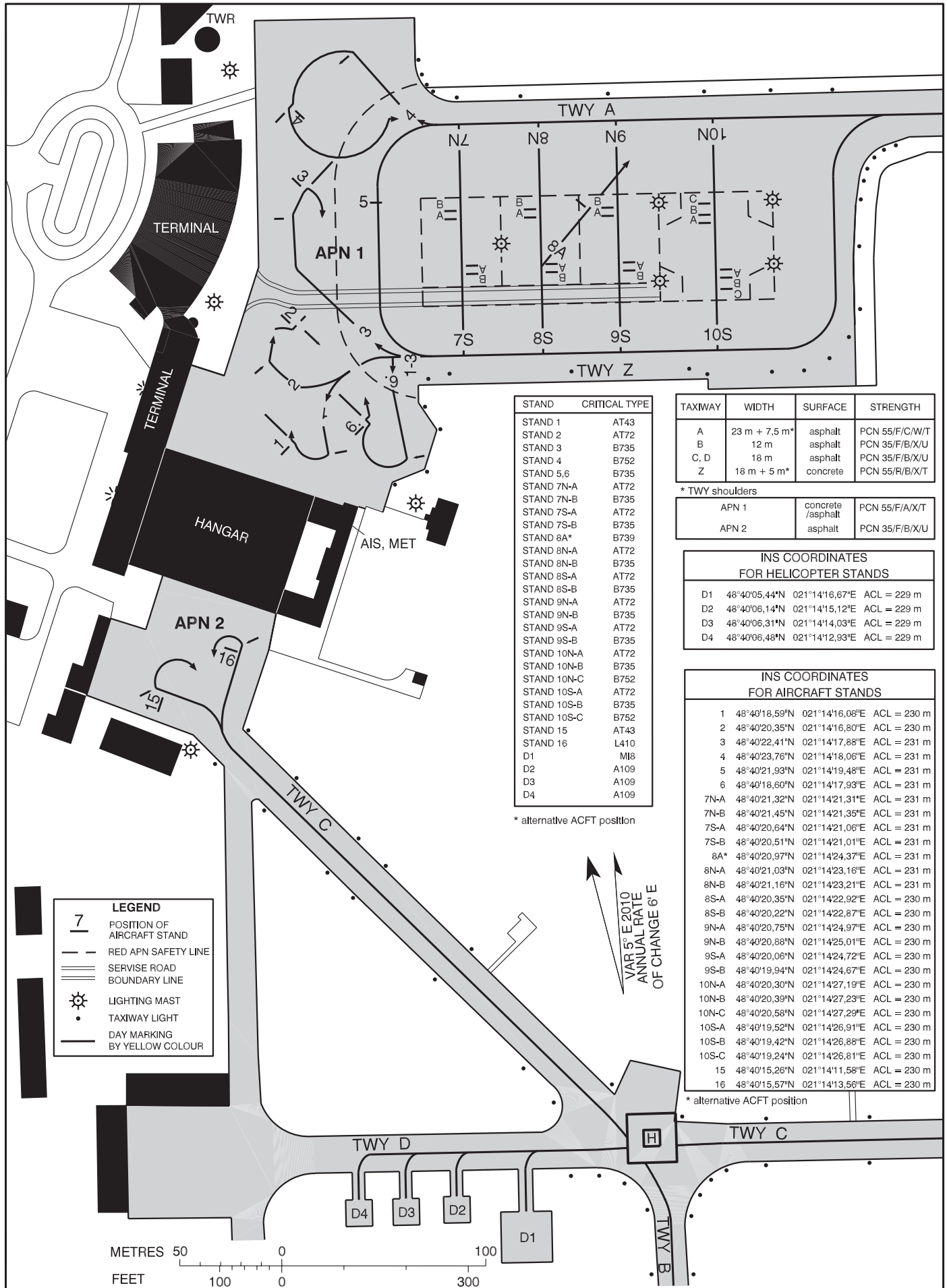


AIRCRAFT PARKING/DOCKING CHART - ICAO

APRON ELEV
231 m

TWR 120,4
121,5

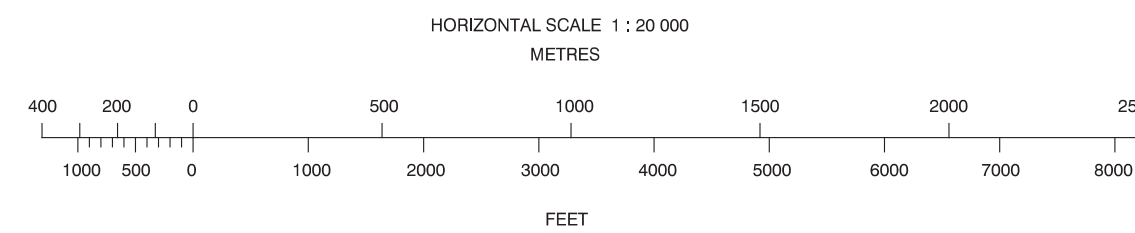
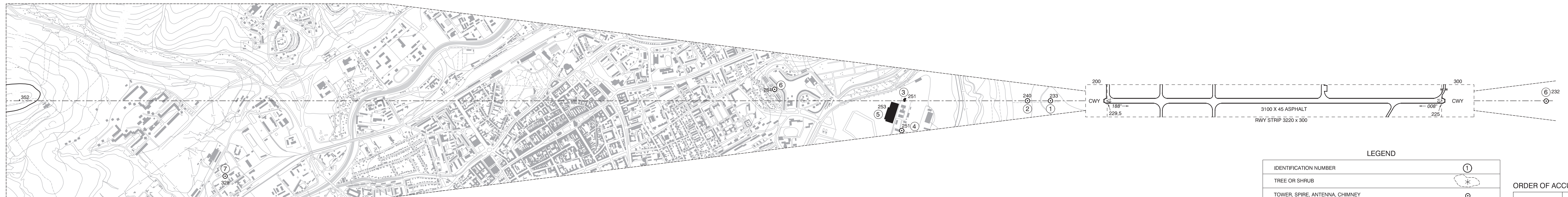
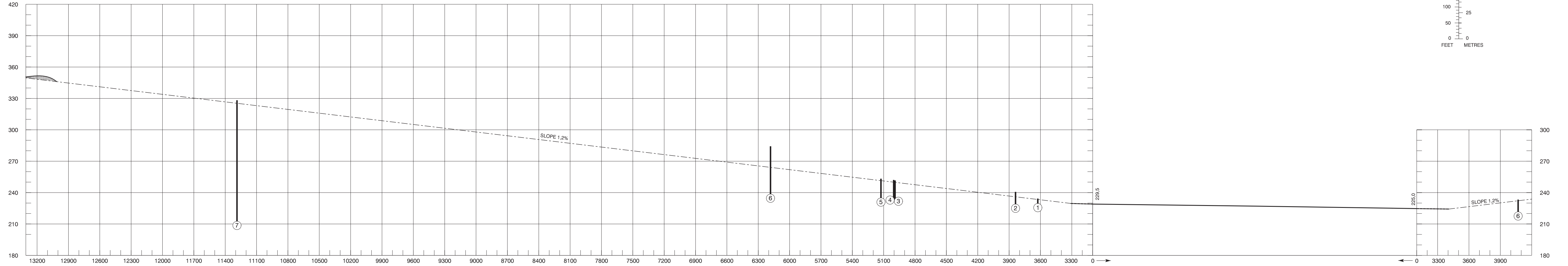
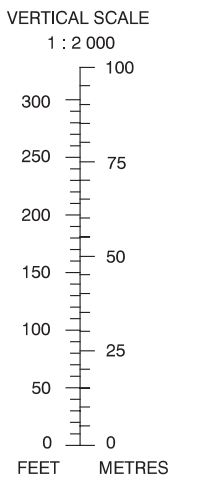
LZKZ
KOŠICE



AERODROME OBSTACLE CHART - ICAO
TYPE A (OPERATING LIMITATIONS)

MAGNETIC DECLINATION/ANNUAL CHANGE 5° E (2010)/+ 0° E
DIMENSIONS AND ELEVATIONS IN METRES

RWY 01/19		DECLARED DISTANCES	
RWY 01			RWY 19
3100	TAKE - OFF RUN AVAILABLE		3100
3300	TAKE - OFF DISTANCE AVAILABLE		3400
3100	ACCELERATE STOP DISTANCE AVAILABLE		3100
3100	LANDING DISTANCE AVAILABLE		3100

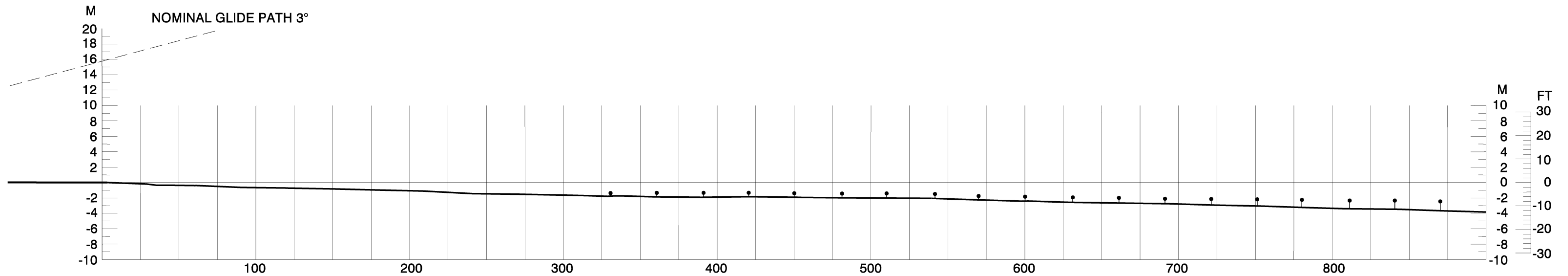
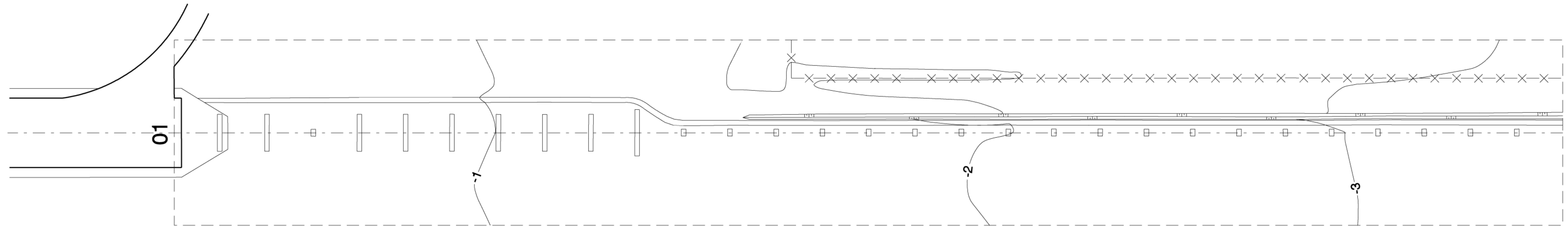


LEGEND		ORDER OF ACCURACY	
IDENTIFICATION NUMBER	①	HORIZONTAL	2 m
TREE OR SHRUB	*	VERTICAL	1 m
TOWER, SPIRE, ANTENNA, CHIMNEY	⊙	AMENDMENT RECORD	
BUILDING	■	NO	DATE
CHURCH	⊕	ENTERED BY	
RAILROAD	—+—+—+—+—		
ROAD	==		
TRANSMISSION LINE	—T—T—		
CONTOUR	~100~		
TERRAIN PENETRATING OBSTRUCTION PLANE	⌒		
HYDROGRAPHY	⌒		

PRECISION APPROACH TERRAIN CHART - ICAO

KOŠICE
RWY 01

DISTANCES AND HEIGHTS IN METRES



HORIZONTAL SCALE 1:2500

VERTICAL SCALE 1:500

LEGEND	
	CONTOUR
	CENTRE-LINE PROFILE
	APPROACH LIGHTS

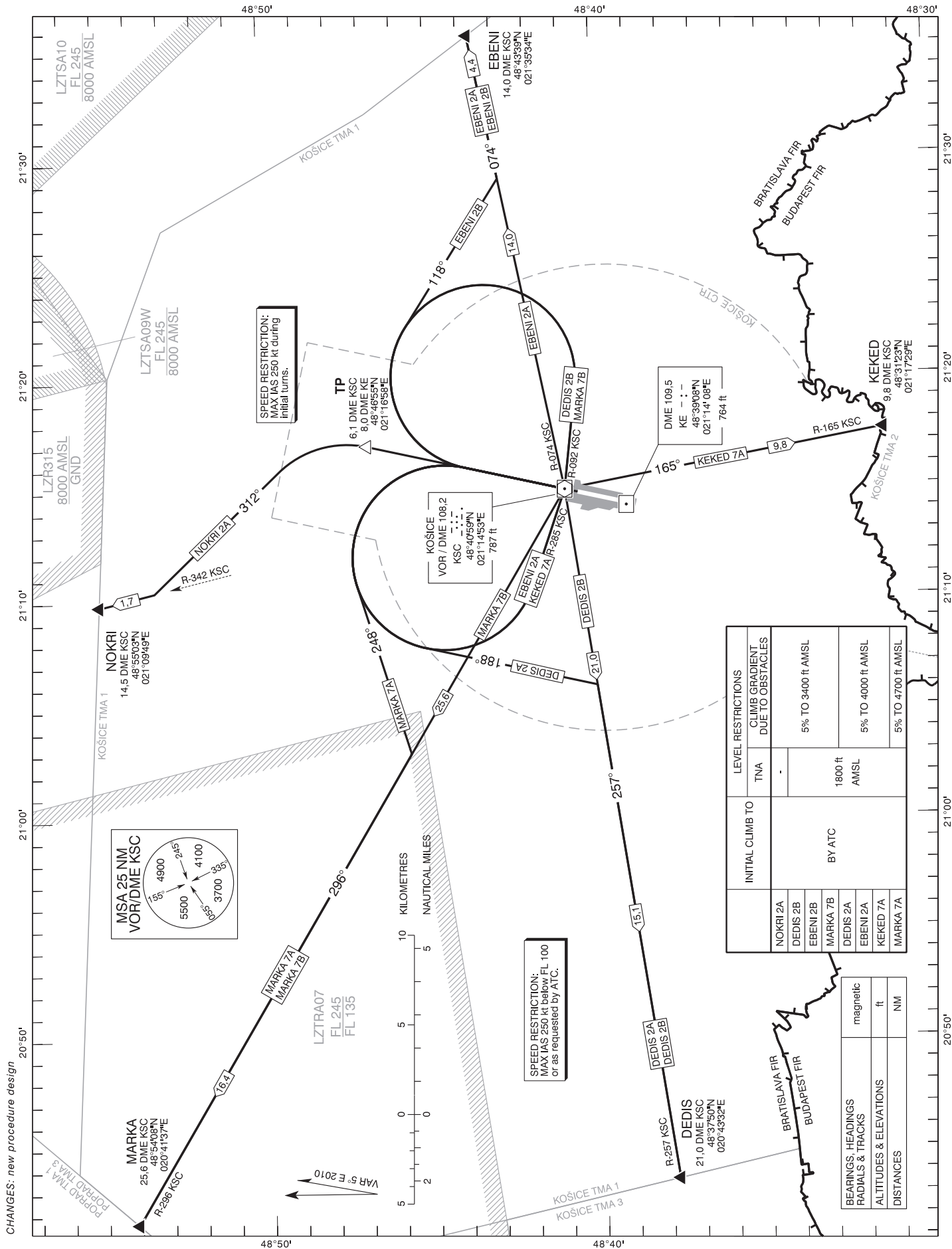
CONTOURS AND HEIGHTS ARE RELATED TO ELEVATION OF RWY THR

STANDARD DEPARTURE CHART -
INSTRUMENT (SID) - ICAO

TRANSITION ALTITUDE
8000 ft

KOŠICE APPROACH / RADAR 119,850
KOŠICE TOWER 120,400
KOŠICE ATIS 133,725

KOŠICE
RWY 01

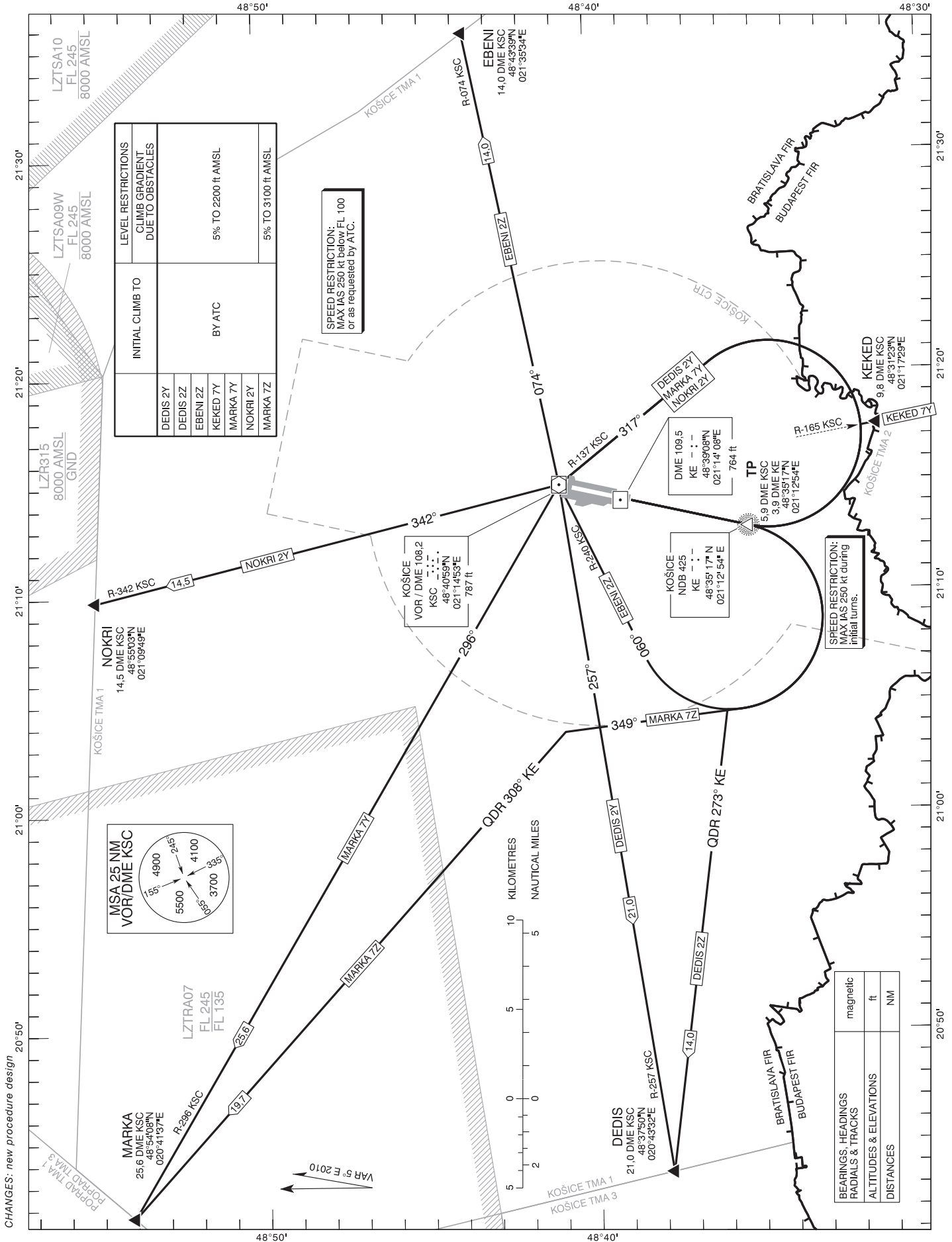


STANDARD DEPARTURE CHART -
INSTRUMENT (SID) - ICAO

TRANSITION ALTITUDE
8000 ft

KOŠICE APPROACH / RADAR 119,850
KOŠICE TOWER 120,400
KOŠICE ATIS 133,725

KOŠICE
RWY 19

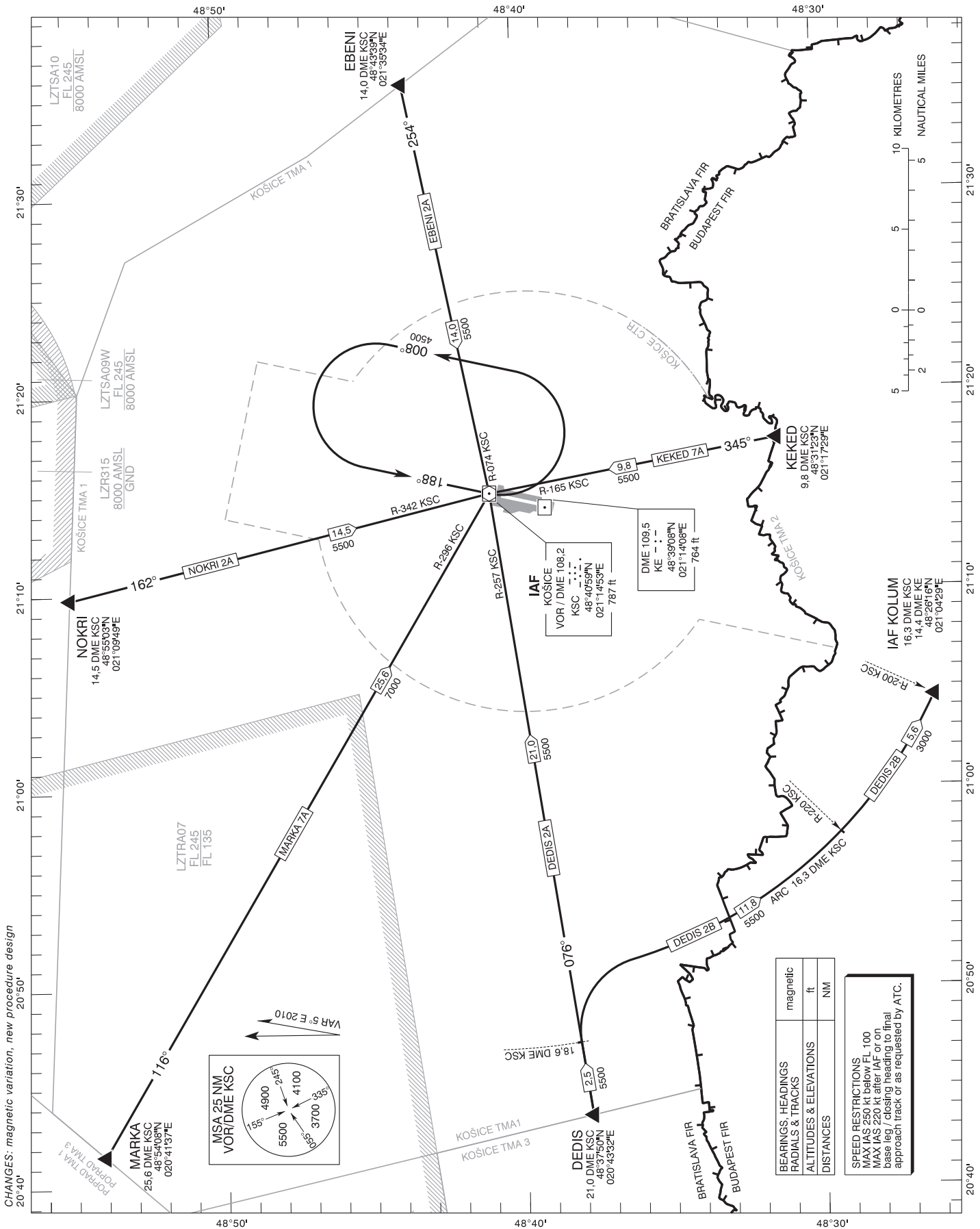


STANDARD ARRIVAL CHART -
INSTRUMENT (STAR) - ICAO

KOŠICE
RWY 01, 19

TRANSITION ALTITUDE
8000 ft

KOŠICE APPROACH / RADAR 119,850
KOŠICE TOWER 120,400
KOŠICE ATIS 133,725



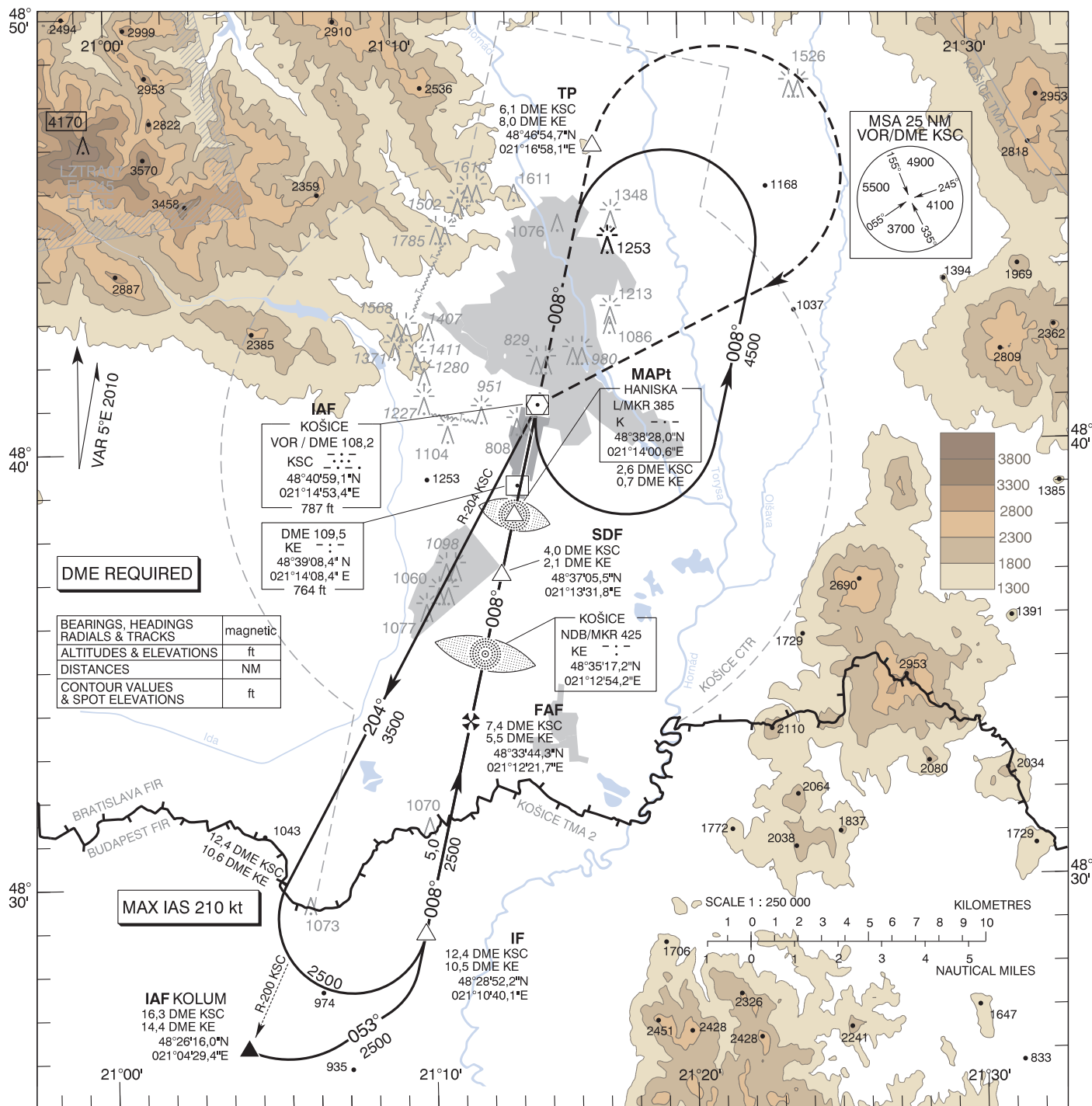
INSTRUMENT
APPROACH
CHART - ICAO

TRANSITION ALTITUDE
8000 ft

AD ELEV 755 - 28 hPa
THR RWY 01 ELEV 739 - 27 hPa

KOŠICE APPROACH / RADAR 119,850
KOŠICE TOWER 120,400
KOŠICE ATIS 133,725

KOŠICE
LZKZ VOR
RWY 01



MAX IAS 210 kt

MISSED APPROACH
Climb to TP
(6,1 DME KSC / 8,0 DME KE),
turn RIGHT to VOR KSC
climbing to 4500 AMSL and hold.
MAX IAS 210 kt until
established on track to VOR KSC.

CHANGES: new procedure design

THR RWY 01 ELEV 739 - 27 hPa
NM to/from THR RWY 01

OCA (OCH)		A	B	C	D	
Straight-in Approach	without SDF	ft	1270 (531)			
	with SDF	ft	1100 (361)			
Circling		ft	1420 (665)	1680 (925)	2040 (1285)	2430 (1675)

DME KSC	NM	7,0	6,0	5,0	4,0	3,0
ALTITUDES	ft	2359	2041	1722	1404	1086

Ground speed	kt	70	90	100	120	140	160	180
FAF - MAPt (4,9 NM)	min:sec	4:10	3:14	2:55	2:26	2:05	1:49	1:37
Rate of descent (5,2%)	ft/min	372	478	531	637	743	849	955

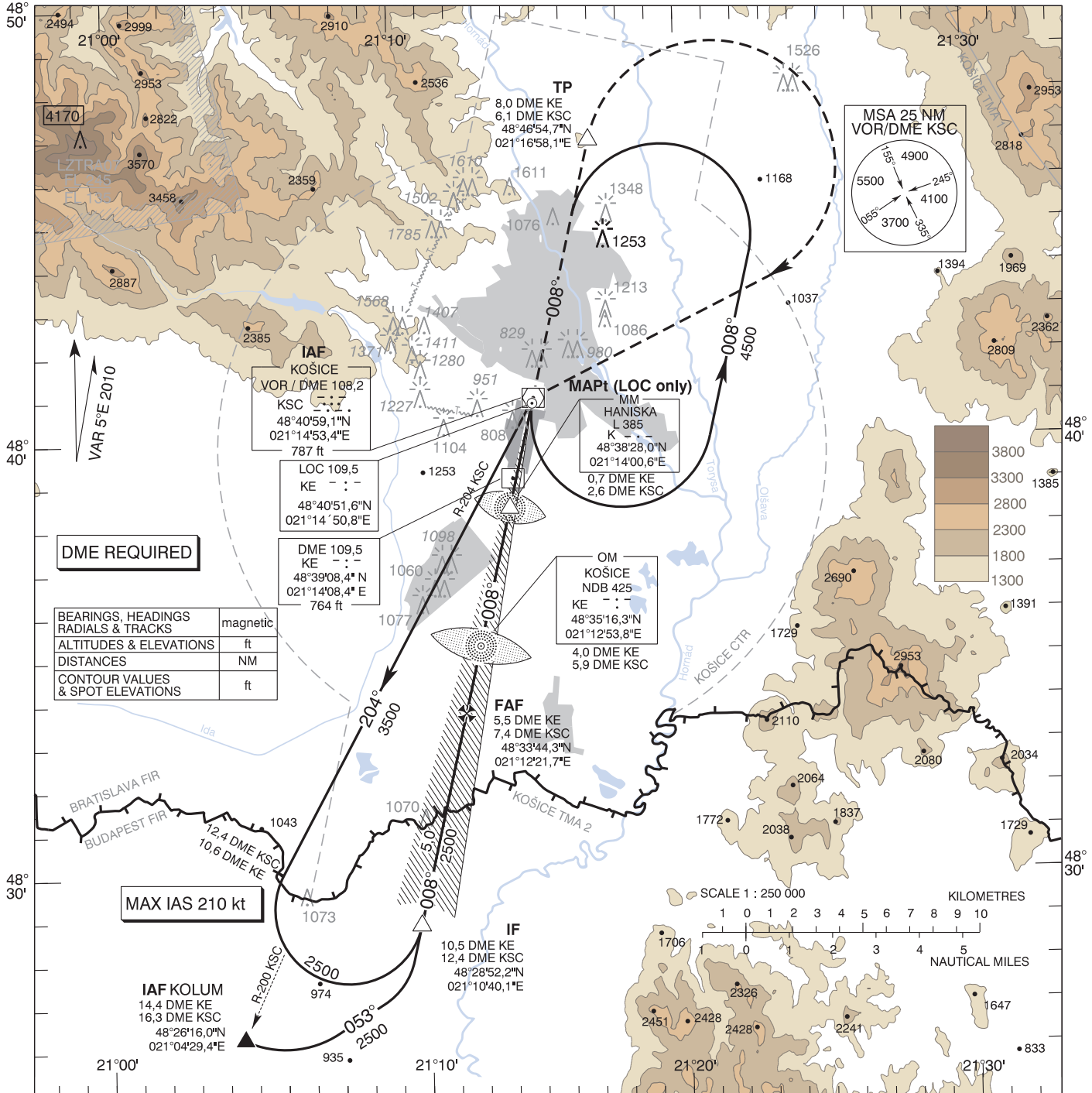
Timing not authorized for defining the MAPt

**INSTRUMENT
APPROACH
CHART - ICAO**

TRANSITION ALTITUDE
8000 ft
AD ELEV 755 - 28 hPa
THR RWY 01 ELEV 738,4 - 27 hPa

KOŠICE APPROACH / RADAR 119,850
KOŠICE TOWER 120,400
KOŠICE ATIS 133,725

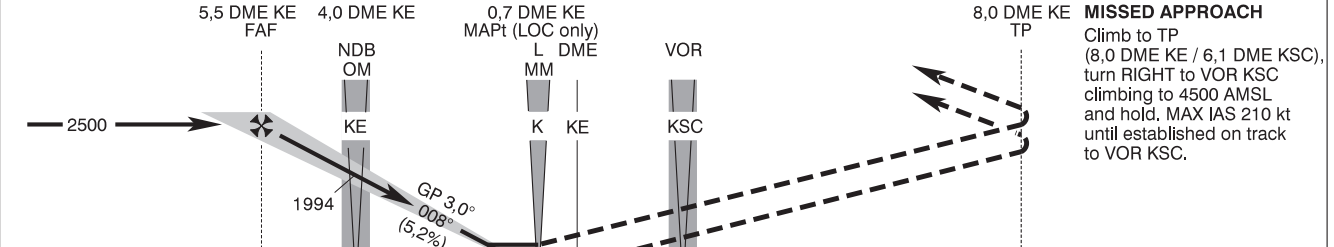
**KOŠICE
LZKZ ILS CAT I & II or LOC
RWY 01**



DME REQUIRED

BEARINGS, HEADINGS RADIALS & TRACKS	magnetic
ALTITUDES & ELEVATIONS	ft
DISTANCES	NM
CONTOUR VALUES & SPOT ELEVATIONS	ft

MAX IAS 210 kt



MISSED APPROACH
Climb to TP
(8,0 DME KE / 6,1 DME KSC),
turn RIGHT to VOR KSC
climbing to 4500 AMSL
and hold. MAX IAS 210 kt
until established on track
to VOR KSC.

THR RWY 01 ELEV 738,4 - 27 hPa;
NM to/from THR RWY 01

ILS RDH 52

CHANGES: new procedure design

OCA (OCH)		A	B	C	D
Straight - in Approach	Cat I	ft 899 (161)	911 (173)	919 (181)	930 (192)
	Cat II	ft 811 (73)	828 (90)	840 (102)	854 (116)
	LOC	ft 1100 (362)			
Circling	ft	1420 (665)	1680 (925)	2040 (1285)	2430 (1675)

DME KE	NM	5,0	4,0	3,0	2,0	1,0
ALTITUDES	ft	2331	2012	1694	1375	1056

Ground speed	kt	70	90	100	120	140	160	180
FAF - MAPt (4,9 NM)	min:s	4:10	3:14	2:55	2:26	2:05	1:49	1:37
RATE of descent (5,2%)	ft/min	372	478	531	637	743	849	955

Timing not authorized for defining the MAPt

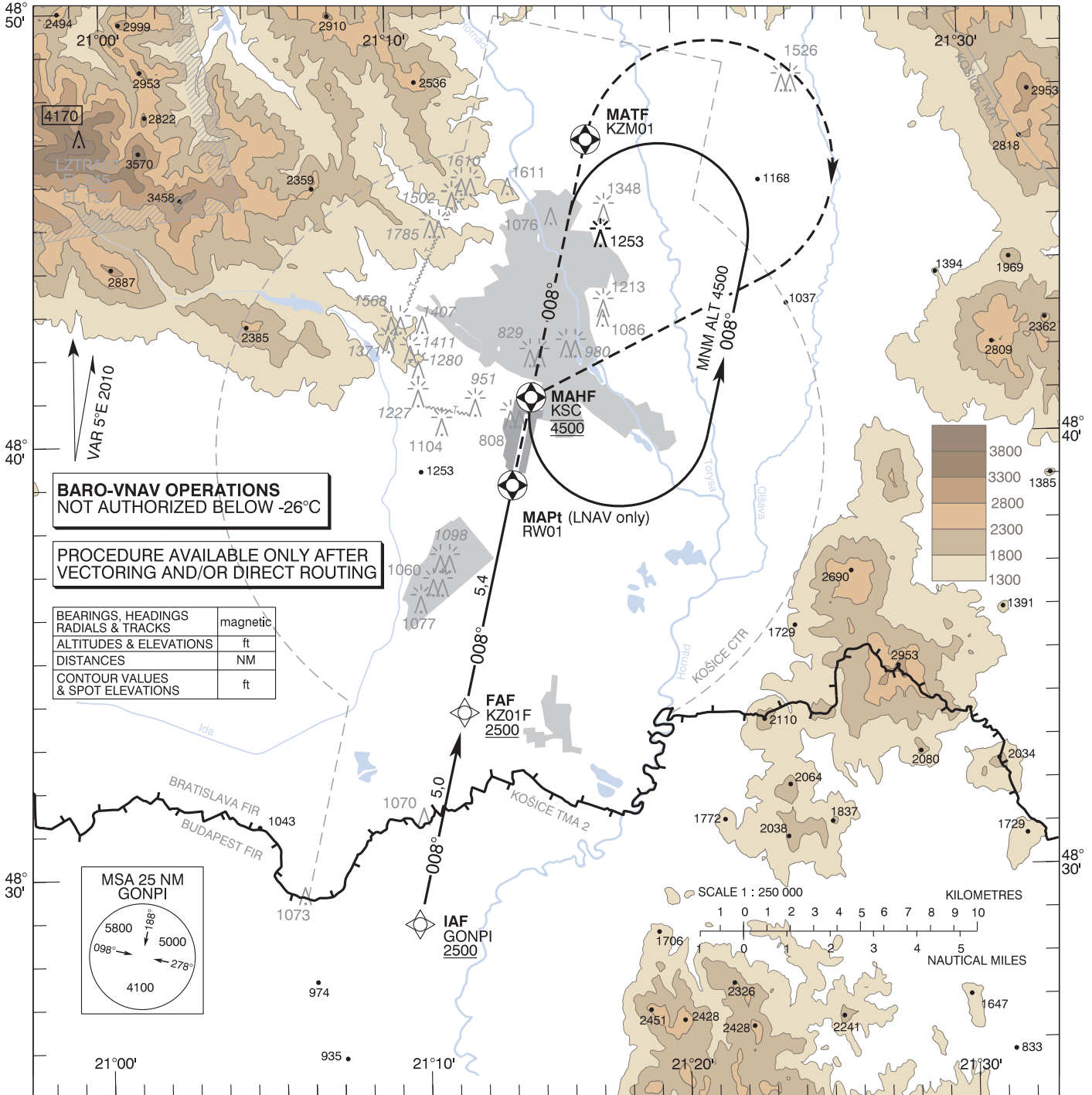
**INSTRUMENT
APPROACH
CHART - ICAO**

TRANSITION ALTITUDE
8000 ft
AD ELEV 755 -28 hPa
THR RWY 01 ELEV 738,4 -27 hPa

KOŠICE APPROACH / RADAR 119,850
KOŠICE TOWER 120,400
KOŠICE ATIS 133,725

EGNOS
CH 59257
E01A

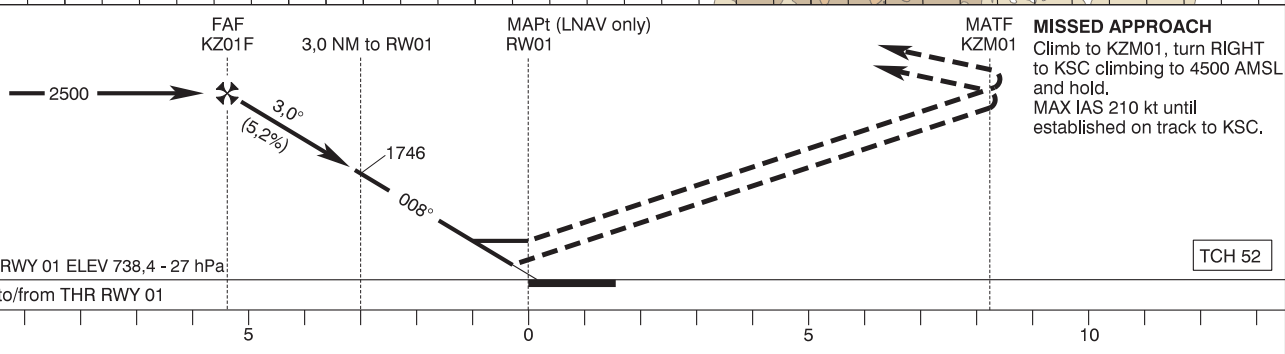
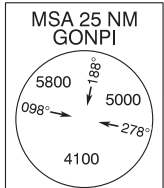
**KOŠICE
LZKZ RNAV(GNSS)
RWY 01**



**BARO-VNAV OPERATIONS
NOT AUTHORIZED BELOW -26°C**

**PROCEDURE AVAILABLE ONLY AFTER
VECTORIZING AND/OR DIRECT ROUTING**

BEARINGS, HEADINGS RADIALS & TRACKS	magnetic
ALTITUDES & ELEVATIONS	ft
DISTANCES	NM
CONTOUR VALUES & SPOT ELEVATIONS	ft



THR RWY 01 ELEV 738,4 - 27 hPa
NM to/from THR RWY 01

TCH 52

CHANGES: new chart

OCA (OCH)		A	B	C	D	Dist RWY01 (THR) NM	5,0	4,0	3,0	2,0	1,0			
Straight - in Approach	LNAV	ft 1100 (362)				ALTITUDES	ft	2383	2064	1746	1427	1109		
	LNAV/VNAV	ft 1100 (362)				Ground speed	kt	70	90	100	120	140	160	180
	LPV	ft	984 (246)	996 (258)	1004 (266)	1015 (277)	KZ01F - RWY01 (5,4 NM)	min:sec	4:36	3:35	3:13	2:41	2:18	2:01
Circling	ft	1420 (665)	1680 (925)	2040 (1285)	2430 (1675)	Rate of descent (5,2%)	ft/min	372	478	531	637	743	849	955

Timing not authorized for defining the MAPt

Instrument Approach Procedure Coding Table: Košice RNAV _(GNSS) RWY 01										
Path Terminator	Waypoint				Course / Track MAG (True)	DIST	Turn Direction	Constraints		Remarks
	Identifier	Type	Flyover	Coordinates				Level	Speed	
IF	GONPI	IAF	NO	48°28'52.23"N 021°10'40.14"E	-	-	-	2500 FT AMSL	-	-
TF	KZ01F	FAF	NO	48°33'44.35"N 021°12'21.67"E	008° (013.0°)	5.0 NM	-	2500 FT AMSL	-	-
TF	RW01	MAPt	YES	48°38'58.01"N 021°14'11.06"E	008° (013.0°)	5.4 NM	-	-	-	-
TF	KZM01	MATF	YES	48°46'54.74"N 021°16'58.07"E	008° (013.0°)	8.2 NM	-	-	210 KT	-
DF	KSC	MAHF	YES	48°40'59.12"N 021°14'53.40"E	-	-	RIGHT	4500 FT AMSL	-	-
RNAV Holding										
Holding Point	Inbound Track MAG (True)	Turn Direction	MAX IAS	Minimum Holding Altitude	Time	DIST	Remarks			
KSC	188° (193.1°)	LEFT	-	4500 FT AMSL	1 MIN	-	-			

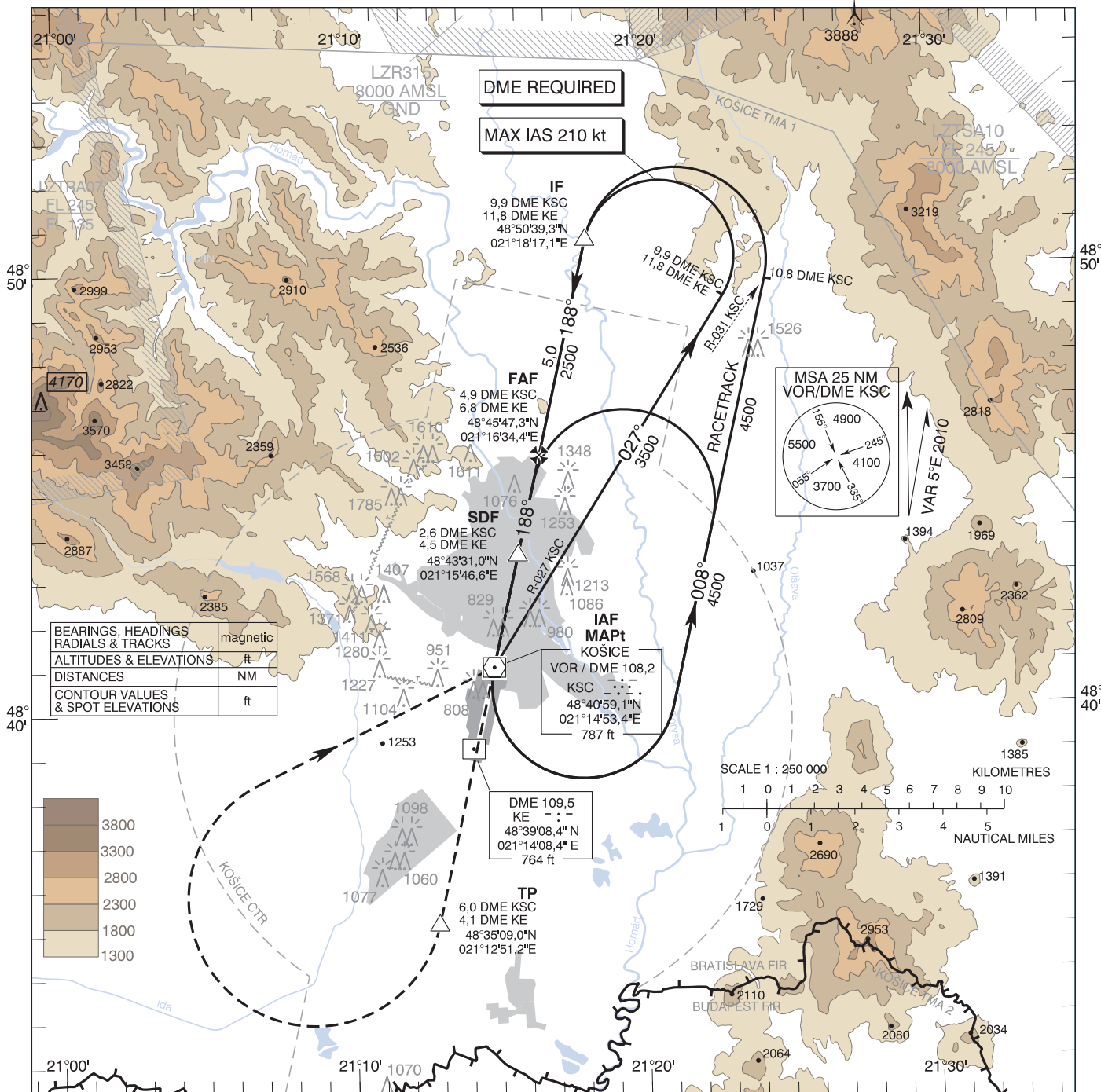
SBAS FAS Data Block Coding Table Košice RNAV _(GNSS) RWY 01	
Input Data	
Parameters	Values
Operation Type	0
SBAS Provider	1
Airport Identifier	LZKZ
Runway	01
Runway Direction	0
Approach Performance Designator	0
Route Indicator	
Reference Path Data Selector	0
Reference Path Identifier	E01A
LTP/FTP Latitude	483858.0125N
LTP/FTP Longitude	0211411.0615E
LTP/FTP Ellipsoidal Height (metres)	265.5
FPAP Latitude	484041.9605N
Delta FPAP Latitude (seconds)	103.9480
FPAP Longitude	0211447.4000E
Delta FPAP Longitude (seconds)	36.3385
Threshold Crossing Height	15.80
TCH Units Selector	1
Glidepath Angle (degrees)	3.00
Course Width (metres)	105.00
Length Offset (metres)	200
HAL (metres)	40.0
VAL (metres)	50.0
Output Data	
Data Block	10 1A 0B 1A 0C 01 00 00 01 31 30 05 B9 C9 E0 14 EB 19 1D 09 5F 1E 18 2C 03 E5 1B 01 3C 81 2C 01 64 19 C8 FA 36 FF 2E 6C
Calculated CRC Value	36FF2E6C
Required Additional Data (not CRC wrapped)	
Parameters	Values
ICAO Code	LZ
LTP/FTP Orthometric Height (metres)	225.1
FPAP Orthometric Height (metres)	225.1

**INSTRUMENT
APPROACH
CHART - ICAO**

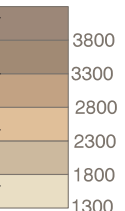
TRANSITION ALTITUDE
8000 ft
AD ELEV 755 - 28 hPa
THR RWY 19 ELEV 753 - 28 hPa

KOŠICE APPROACH / RADAR 119,850
KOŠICE TOWER 120,400
KOŠICE ATIS 133,725

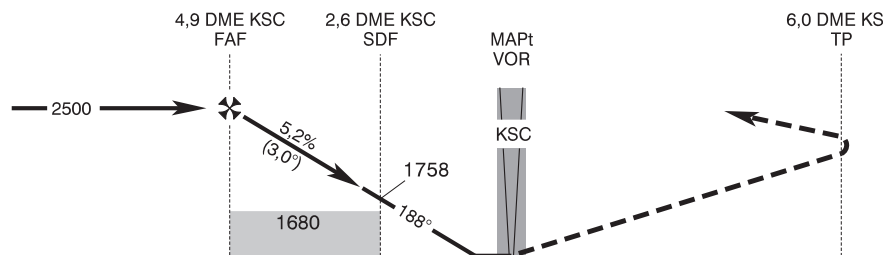
**KOŠICE
LZKZ VOR
RWY 19**



BEARINGS, HEADINGS	magnetic
RADIALS & TRACKS	
ALTITUDES & ELEVATIONS	ft
DISTANCES	NM
CONTOUR VALUES & SPOT ELEVATIONS	ft



MISSED APPROACH
Climb to TP (6,0 DME KSC / 4,1 DME KE), turn RIGHT to VOR KSC climbing to 4500 AMSL and hold, MAX IAS 210 kt until established on track to VOR KSC.



THR RWY 19 ELEV 753 - 28 hPa
NM to/from THR RWY 19

OCA (OCH)		A	B	C	D
Straight - in Approach	without SDF	ft	1680 (925)		
	with SDF	ft	1250 (495)		
Circling		ft	1420 (665)	1680 (925)	2040 (1285) 2430 (1675)

DME KSC	NM	5,0	4,0	3,0	2,0	1,0
ALTITUDES	ft	2521	2203	1884	1566	1247

Ground speed	kt	70	90	100	120	140	160	180
FAF - MAPt (4,9 NM)	min:sec	4:14	3:17	2:58	2:28	2:07	1:51	1:39
Rate of descent (5,2%)	ft/min	372	478	531	637	743	849	955

Timing not authorized for defining the MAPt

CHANGES: new procedure design

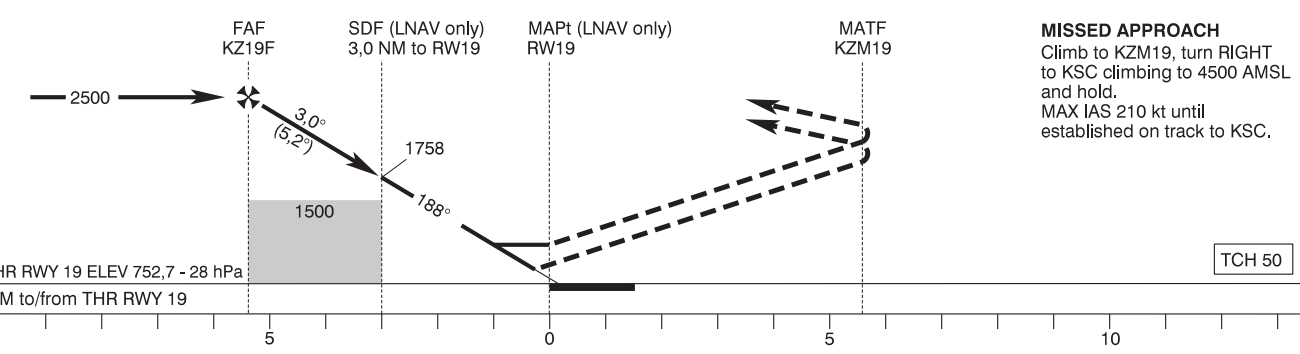
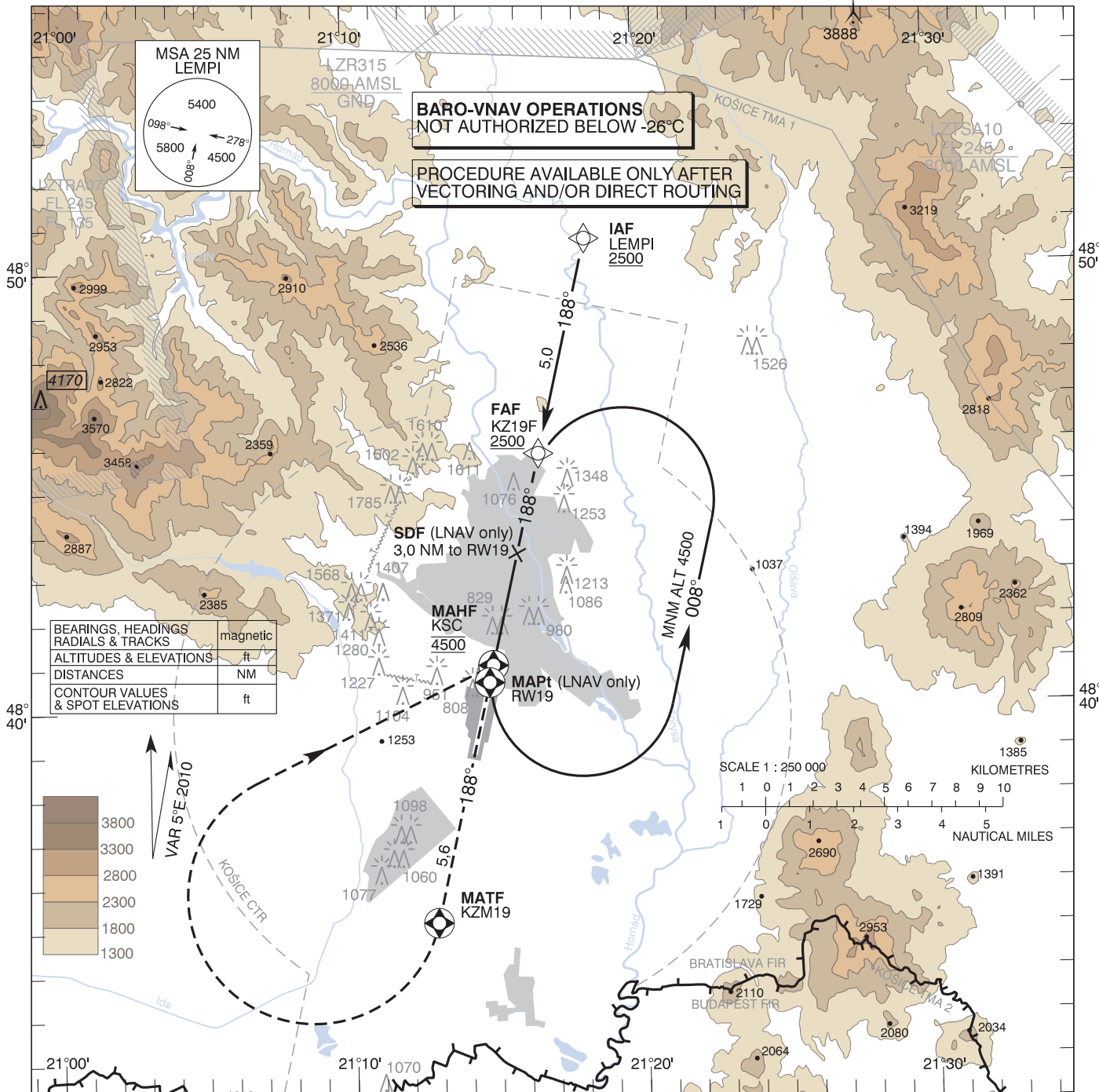
**INSTRUMENT
APPROACH
CHART - ICAO**

TRANSITION ALTITUDE
8000 ft
AD ELEV 755 -28 hPa
THR RWY 19 ELEV 752,7 -28 hPa

KOŠICE APPROACH / RADAR 119,850
KOŠICE TOWER 120,400
KOŠICE ATIS 133,725

EGNOS
CH 65545
E19A

KOŠICE
LZKZ RNAV (GNSS)
RWY 19



OCA (OCH)		A	B	C	D	Dist RWY19 (THR) NM	5,0	4,0	3,0	2,0	1,0			
Straight - in Approach	LNAV	ft 1180 (425)				ALTITUDES	ft	2395	2076	1758	1440	1121		
	LNAV/VNAV	ft 1110 (357)				Ground speed	kt	70	90	100	120	140	160	180
	LPV	ft	1003 (250)	1015 (262)	1023 (270)	1034 (281)	KZ19F - RWY19 (5,3 NM)	min:sec	4:34	3:33	3:12	2:40	2:17	2:00
Circling	ft	1420 (665)	1680 (925)	2040 (1285)	2430 (1675)	Rate of descent (5,2%)	ft/min	372	478	531	637	743	849	955

Timing not authorized for defining the MAPt

Instrument Approach Procedure Coding Table: Košice RNAV _(GNSS) RWY 19										
Path Terminator	Waypoint				Course / Track MAG (True)	DIST	Turn Direction	Constraints		Remarks
	Identifier	Type	Flyover	Coordinates				Level	Speed	
IF	LEMPI	IAF	NO	48°50'39.30"N 021°18'17.06"E	-	-	-	2500 FT AMSL	-	-
TF	KZ19F	FAF	NO	48°45'47.29"N 021°16'34.39"E	188° (193.1°)	5.0 NM	-	2500 FT AMSL	-	-
TF	RW19	MAPt	YES	48°40'35.81"N 021°14'45.25"E	188° (193.1°)	5.3 NM	-	-	-	-
TF	KZM19	MATF	YES	48°35'09.01"N 021°12'51.15"E	188° (193.0°)	5.6 NM	-	-	210 KT	-
DF	KSC	MAHF	YES	48°40'59.12"N 021°14'53.40"E	-	-	RIGHT	4500 FT AMSL	-	-
RNAV Holding										
Holding Point	Inbound Track MAG (True)	Turn Direction	MAX IAS	Minimum Holding Altitude	Time	DIST	Remarks			
KSC	188° (193.1°)	LEFT	-	4500 FT AMSL	1 MIN	-	-			

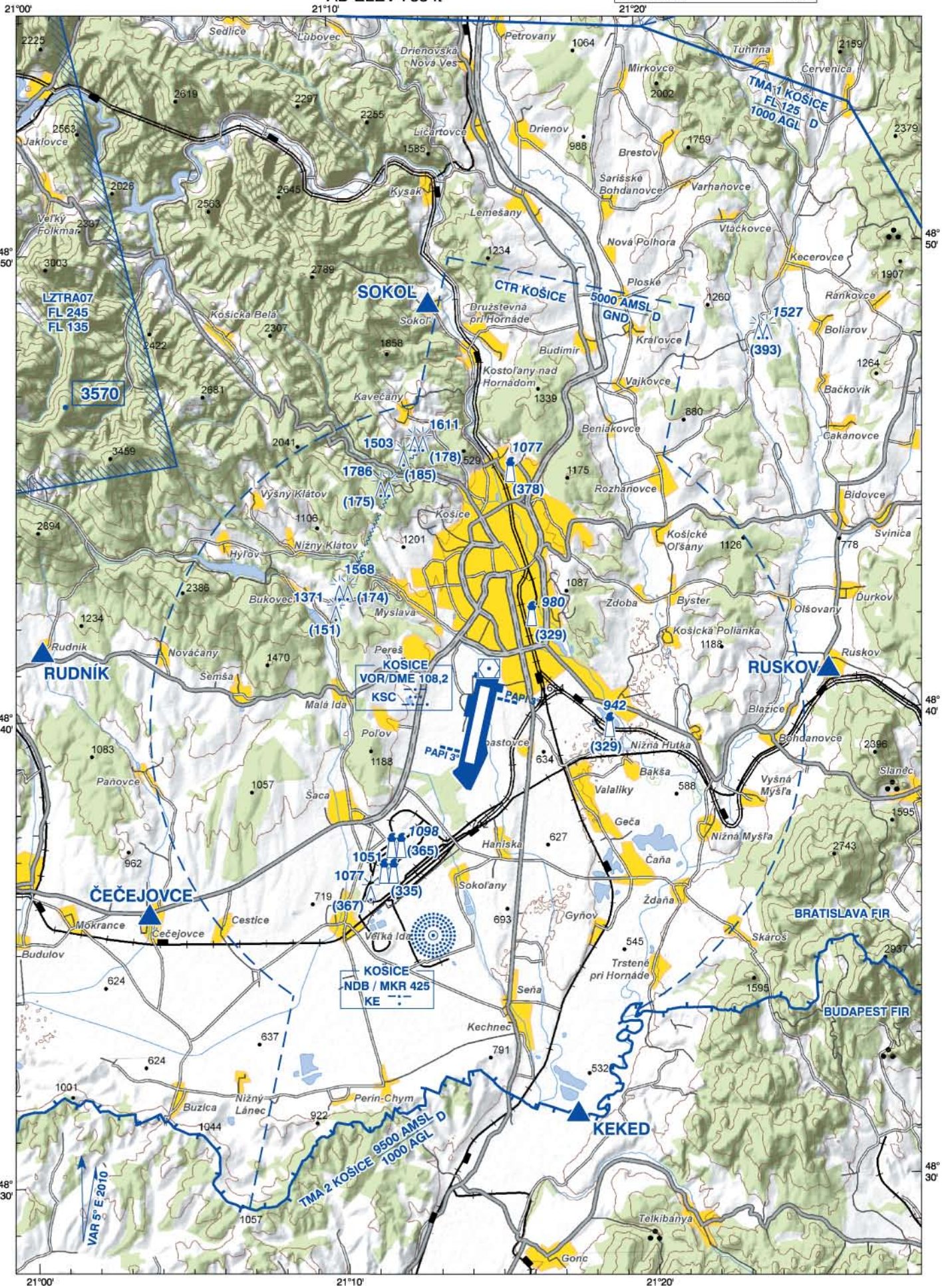
SBAS FAS Data Block Coding Table Košice RNAV _(GNSS) RWY 19	
Input Data	
Parameters	Values
Operation Type	0
SBAS Provider	1
Airport Identifier	LZKZ
Runway	19
Runway Direction	0
Approach Performance Designator	0
Route Indicator	
Reference Path Data Selector	0
Reference Path Identifier	E19A
LTP/FTP Latitude	484035.8065N
LTP/FTP Longitude	0211445.2485E
LTP/FTP Ellipsoidal Height (metres)	269.8
FPAP Latitude	483858.0125N
Delta FPAP Latitude (seconds)	-97.7940
FPAP Longitude	0211411.0615E
Delta FPAP Longitude (seconds)	-34.1870
Threshold Crossing Height	15.00
TCH Units Selector	1
Glidepath Angle (degrees)	3.00
Course Width (metres)	105.00
Length Offset (metres)	0
HAL (metres)	40.0
VAL (metres)	50.0
Output Data	
Data Block	10 1A 0B 1A 0C 13 00 00 01 39 31 05 BD C5 E3 14 01 25 1E 09 8A 1E FC 03 FD EA F4 FE 2C 81 2C 01 64 00 C8 FA A9 EB 53 65
Calculated CRC Value	A9EB5365
Required Additional Data (not CRC wrapped)	
Parameters	Values
ICAO Code	LZ
LTP/FTP Orthometric Height (metres)	229.4
FPAP Orthometric Height (metres)	229.4

VISUAL APPROACH CHART - ICAO

ARP 48°39'47"N 021°14'28"E
AD ELEV 755 ft

KOŠICE APPROACH / RADAR	119,85
KOŠICE TOWER	120,4
KOŠICE ATIS	133,725

KOŠICE



BEARINGS: magnetic
ALTITUDES & ELEVATIONS: ft
CONTOUR VALUES & SPOT ELEVATIONS: ft

SCALE 1 : 200 000
Topographic base 2005



BIRD CONCENTRATIONS

KOŠICE

